

Vice Capital Extraction

420 N PENNSYLVANIA AVE
OKLAHOMA CITY, OK 73107
adam@710trading.com
(405) 740-7926
Lic. #PAAA-EK2L-2W9W

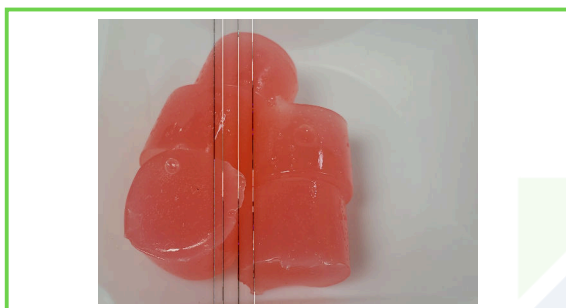
Sample: 2312PLO2704.10275

Strain: Watermelon
External Lot ID: ; Batch#: C4-23-DIST-015(4); Batch Size: g
Sample Received: 12/11/2023; Report Created: 12/18/2023; Expires: 12/18/2025

Sampling: ; Environment:

Gummy | 8g Watermelon

Ingestible, Soft Chew
Harvest Process Lot: ; METRC Batch: ; METRC Sample: 1A40E0100000198000018828



Safety

Pass Pesticides	Pass Microbials	Pass Mycotoxins
Not Tested Solvents	Not Tested Metals	Pass Foreign Matter

Cannabinoids

125.59 mg/unit Total THC	109.83 mg/unit Total CBD	NT Moisture	NT Water Activity
--------------------------------	--------------------------------	----------------	----------------------

Analyte	LOQ mg/unit	Mass mg/unit	Mass mg/g
THCa	0.81	ND	ND
Δ9-THC	0.81	125.59	15.54
Δ8-THC	0.81	ND	ND
THCVa	0.81	ND	ND
THCV	0.81	ND	ND
CBDa	0.81	ND	ND
CBD	0.81	109.83	13.59
CBDV	0.81	<LOQ	<LOQ
CBN	0.81	ND	ND
CBGa	0.81	ND	ND
CBG	0.81	28.45	3.52
CBC	0.81	ND	ND
Total		263.88	32.65

1 Unit = .808g
Total THC = THCa * 0.877 + Δ9-THC. Total CBD = CBDa * 0.877 + CBD
LOQ = Limit of Quantitation; The reported result is based on a sample weight with the applicable moisture content for that sample; Unless otherwise stated all quality control samples performed within specifications established by the Laboratory.

Terpenes

 Magnolia	 Mint	 Apple	0.032% Total Terpenes
---	---	--	--------------------------

Analyte	LOQ %	Mass %	Mass PPM	Analyte	LOQ %	Mass %	Mass PPM
Farnesene	0.002	0.013	128.815	Eucalyptol	0.002	<0.002	<20.000
α-Phellandrene	0.002	0.013	125.014	Fenchone	0.002	<0.002	<20.000
Nerolidol	0.002	0.006	64.733	γ-Terpinene	0.002	<0.002	<20.000
3-Carene	0.002	<0.002	<20.000	Geraniol	0.002	<0.002	<20.000
α-Bisabolol	0.002	<0.002	<20.000	Geranyl Acetate	0.002	<0.002	<20.000
α-Cedrene	0.002	<0.002	<20.000	Guaiol	0.002	<0.002	<20.000
α-Humulene	0.002	<0.002	<20.000	Isoborneol	0.002	<0.002	<20.000
α-Pinene	0.002	<0.002	<20.000	Isopulegol	0.002	<0.002	<20.000
α-Terpinene	0.002	<0.002	<20.000	Limonene	0.002	<0.002	<20.000
α-Terpineol	0.002	<0.002	<20.000	Linalool	0.002	<0.002	<20.000
β-Caryophyllene	0.002	<0.002	<20.000	Menthol	0.002	<0.002	<20.000
β-Myrcene	0.002	<0.002	<20.000	Nerol	0.002	<0.002	<20.000
β-Pinene	0.002	<0.002	<20.000	Ocimene	0.002	<0.002	<20.000
Borneol	0.002	<0.002	<20.000	Phytol	0.002	<0.002	<20.000
Camphene	0.002	<0.002	<20.000	Pulegol	0.002	<0.002	<20.000
Camphor	0.002	<0.002	<20.000	Sabinene	0.002	<0.002	<20.000
Caryophyllene Oxide	0.002	<0.002	<20.000	Sabinene Hydrate	0.002	<0.002	<20.000
Cedrol	0.002	<0.002	<20.000	Terpinolene	0.002	<0.002	<20.000
Endo-Fenchyl Alcohol	0.002	<0.002	<20.000	Valencene	0.002	<0.002	<20.000
Total				Total		0.032	318.562

Notes:



Vice Capital Extraction

420 N PENNSYLVANIA AVE
OKLAHOMA CITY, OK 73107
adam@710trading.com
(405) 740-7926
Lic. #PAAA-EK2L-2W9W

Sample: 2312PLO2704.10275

Strain: Watermelon
External Lot ID: ; Batch#: C4-23-DIST-015(4); Batch Size: g
Sample Received: 12/11/2023; Report Created: 12/18/2023; Expires: 12/18/2025

Sampling: ; Environment:

Gummy | 8g Watermelon

Ingestible, Soft Chew
Harvest Process Lot: ; METRC Batch: ; METRC Sample: 1A40E0100000198000018828



Pesticides

Pass

Analyte	LOQ	Limit	Mass	Status
	PPM	PPM	PPM	
Abamectin	0.160	0.500	ND	Pass
Azoxystrobin	0.080	0.200	ND	Pass
Bifenazate	0.080	0.200	ND	Pass
Etoxazole	0.080	0.200	ND	Pass
Imazalil	0.080	0.200	ND	Pass
Imidacloprid	0.080	0.400	ND	Pass
Malathion	0.080	0.200	ND	Pass
Myclobutanil	0.080	0.200	ND	Pass
Permethrins	0.080	0.200	ND	Pass
Spinosad	0.080	0.200	ND	Pass
Spiromesifen	0.080	0.200	ND	Pass
Spirotetramat	0.080	0.200	ND	Pass
Tebuconazole	0.080	0.400	ND	Pass

Microbials

Pass

Analyte	Limit	Mass	Status
	CFU/g	CFU/g	
Aspergillus flavus	1	ND	Pass
Aspergillus fumigatus	1	ND	Pass
Aspergillus niger	1	ND	Pass
Aspergillus terreus	1	ND	Pass
Salmonella	1	ND	Pass
Shiga Toxin E. Coli	1	ND	Pass
Yeast & Mold	10000	200	Pass

Residual Solvents

Not Tested

Analyte	LOQ	Limit	Mass	Status
---------	-----	-------	------	--------

Heavy Metals

Not Tested

Analyte	LOQ	Limit	Mass	Status
---------	-----	-------	------	--------

Mycotoxins

Pass

Analyte	LOQ	Limit	Mass	Status
	PPB	PPB	PPB	
Aflatoxins	5.00	20.00	ND	Pass
Ochratoxin A	5.00	20.00	ND	Pass